

AENC-TQST-LAN-DWG-0002

Norwich to Tilbury

Volume 2: Plans, Drawings and Sections

Document: 2.2 Land Plans - Section G

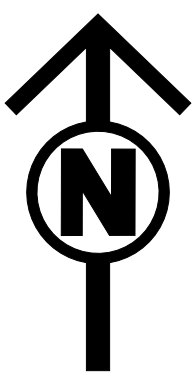
Final Issue D

June 2026

Planning Inspectorate Reference: EN020027

Infrastructure Planning (Applications: Prescribed Forms and Procedure)
Regulations 2009 Regulation 5(2)(i)(i)-(iii)

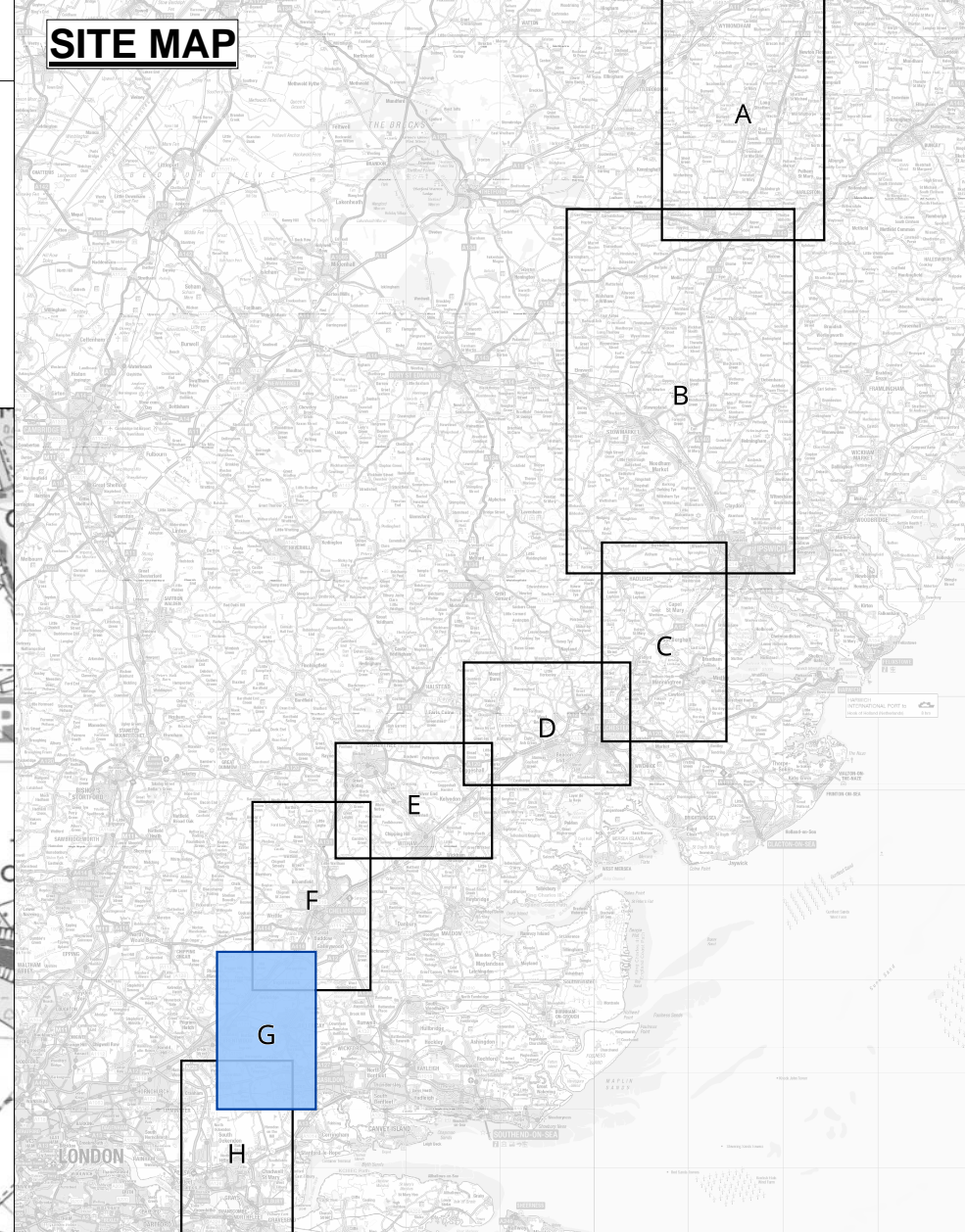
nationalgrid



LAND PLANS KEY PLAN
REGULATION 5(2)(i)-(iii)
SECTION G (SHEET 1 OF 1,

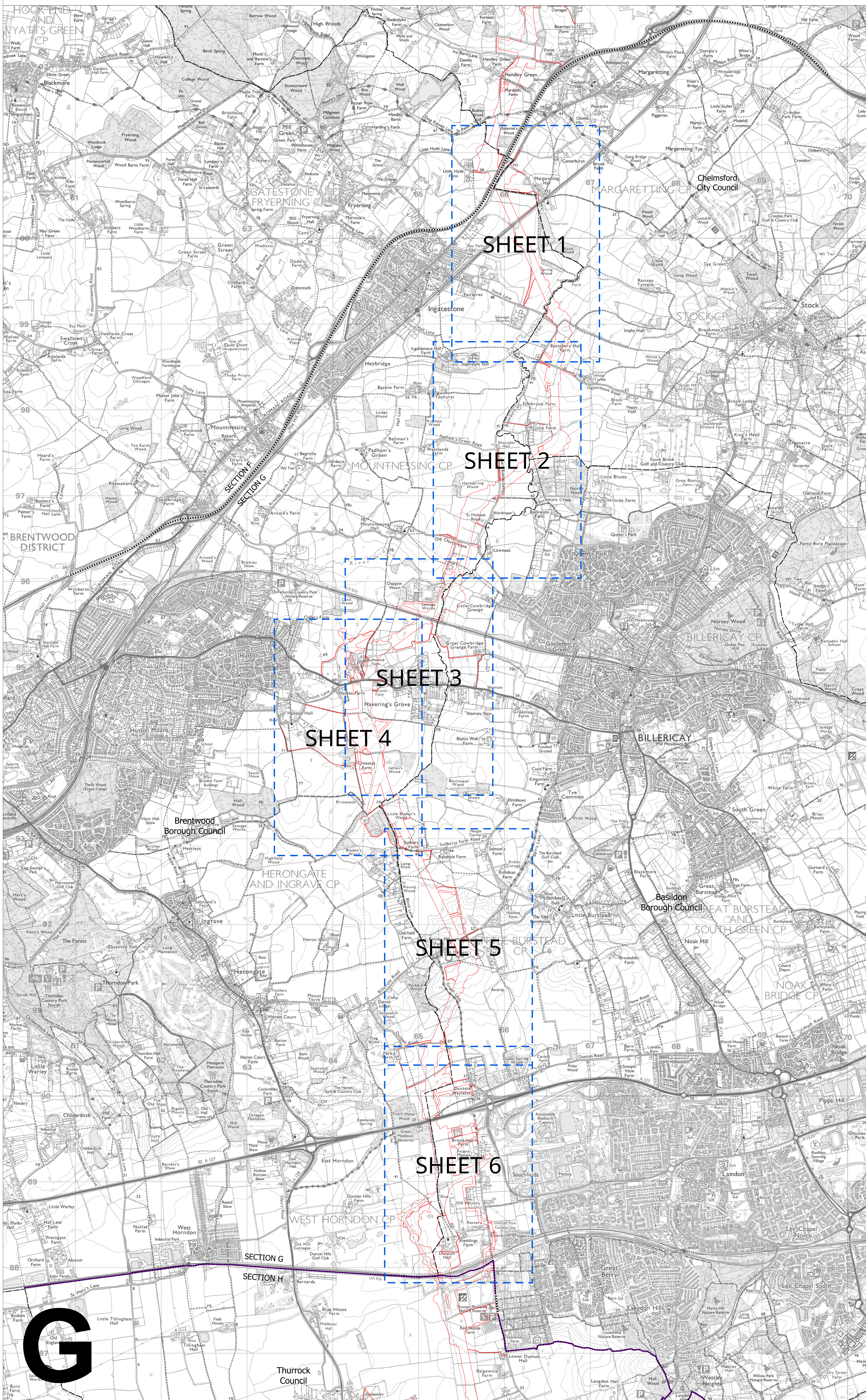
CHELMSFORD CITY COUNCIL, BRENTWOOD BOROUGH COUNCIL, BASILDON BOROUGH COUNCIL AND THURROCK COUNCIL)

SITE MAP



Legend

- Local authority boundary
- Section boundary & local authority boundary
- Section boundary
- Sheet Index
- Order Limits



Notes

- For additional detail on the plan suites, please refer to the Guide to Plans (document reference 2.0), located in the Volume 2 of the DCO application.
- This drawing is scaled at paper size A0, therefore any prints taken at smaller sizes will affect accuracy of the measurement units and should not be scaled against.

Coordinate System: British National Grid
Sheet X Centroid Coordinate : 565210 Sheet Y Centroid Coordinate : 194573

BACKGROUND MAPPING INFORMATION HAS BEEN REPRODUCED FROM THE ORDNANCE SURVEY BY PERMISSION OF ORDNANCE SURVEY OF THE CONTROLLER OF HIS MAJESTY'S STATIONERY OFFICE. © CROWN COPYRIGHT AND DATABASE RIGHTS(2025) LICENCE OS100024241 AND AC000807946.

Issue	Date	Remarks	Drawn	Checked	Approved
D	JUN-2026	For deadline five	CLJ	RCA	KPA
C	MAY-2026	For deadline four	CLJ	RCA	KPA
B	OCT-2025	October 2025 Update	CLJ	AMI	TPR
A	AUG-2025	For DCO Submission	CLJ	KPA	TPR

Title:
THE NATIONAL GRID (NORWICH TO TILBURY) ORDER
LAND PLANS KEY PLAN
REGULATION 5(2)(i)-(iii)
SECTION G (SHEET 1 OF 1)
CHELMSFORD CITY COUNCIL,
BRENTWOOD BOROUGH COUNCIL,
BASILDON BOROUGH COUNCIL,
AND THURROCK COUNCIL)

nationalgrid

PINS Application Number
EN020027

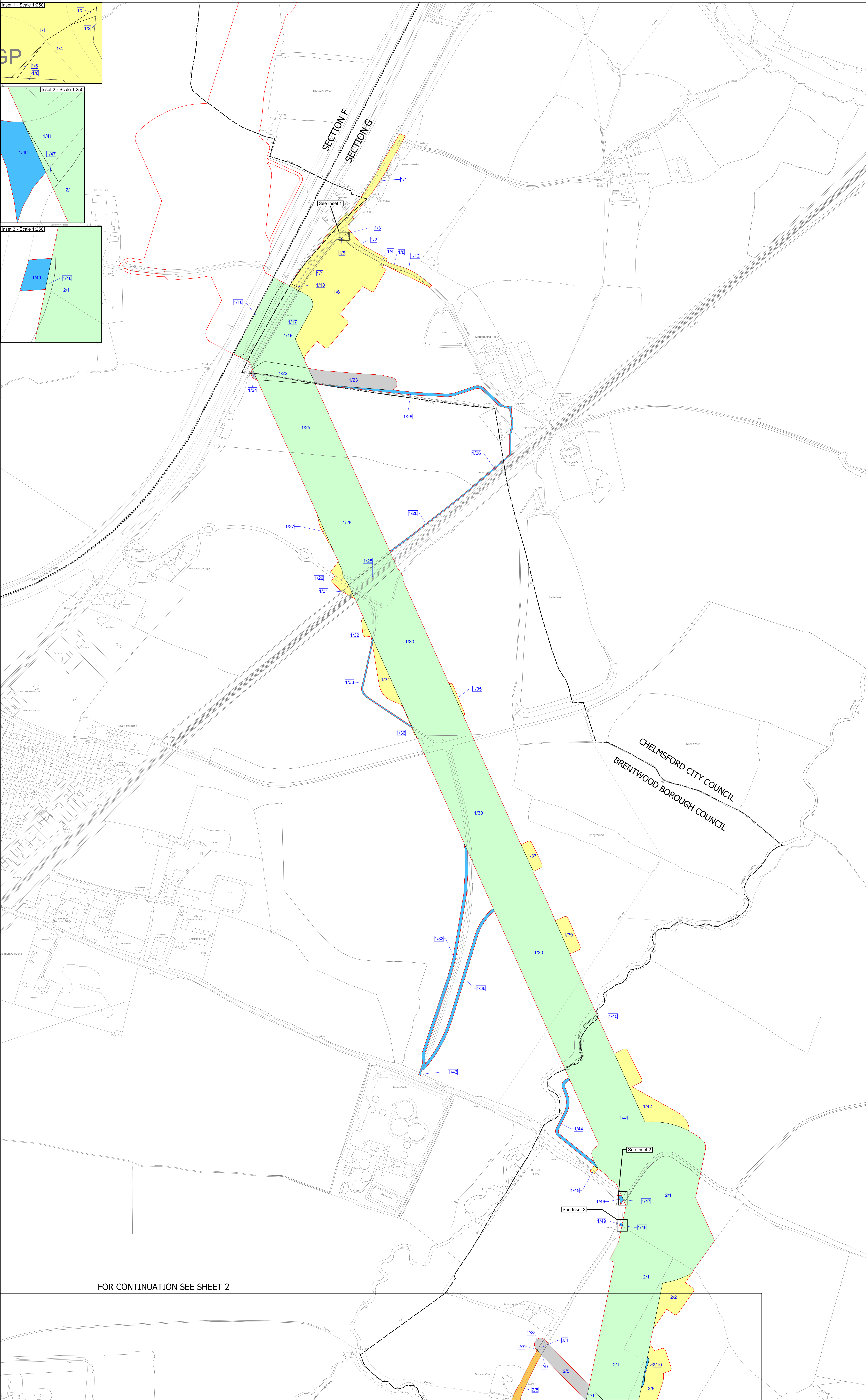
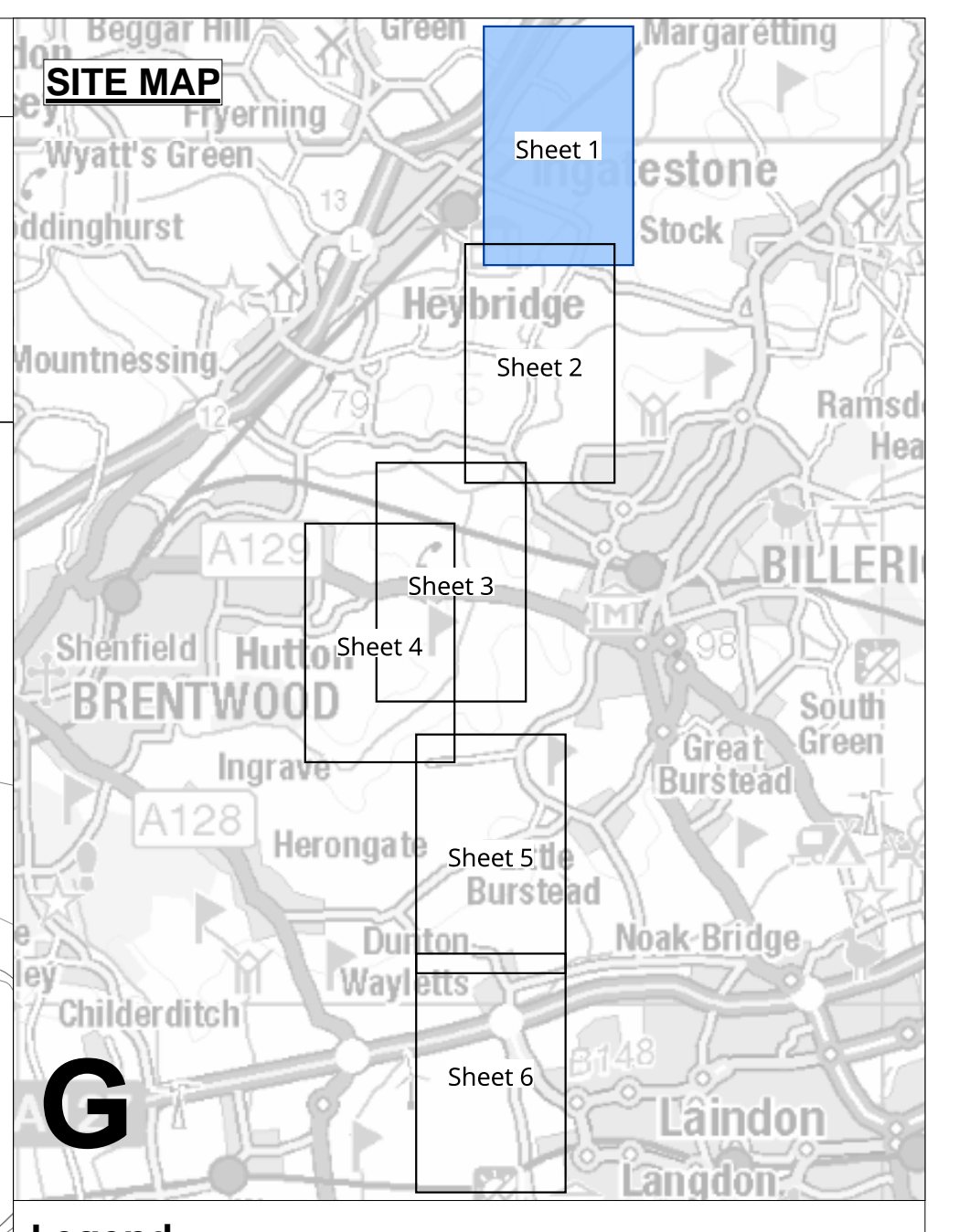
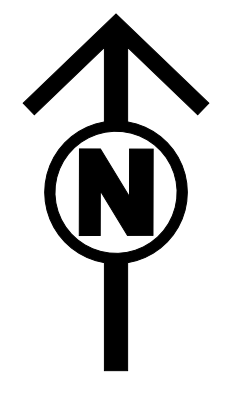
National Grid Drawing Reference
AENC-TQST-LAN-DWG-0002

Scale	Sheet Size	Sheet	Issue
1:15,000	A0	SHEET 1 of 1	D



THE NATIONAL GRID (NORWICH TO TILBURY) ORDER
 LAND PLANS
 REGULATION 5(2)(i)-(iii)
 SECTION G (SHEET 1 OF 6,
 CHELMSFORD CITY COUNCIL AND BRENTWOOD BOROUGH COUNCIL)

Application Document 2.2



- Legend**
- Local authority boundary
 - Section boundary & local authority boundary
 - Section boundary
 - Sheet index cutlines
 - Order Limits
 - Class 1 - Compulsory acquisition of land
 - Class 2 - Compulsory acquisition of rights - Overhead line
 - Class 3 - Compulsory acquisition of rights - Underground cable system
 - Class 4 - Compulsory acquisition of rights - Overhead line and underground cable system
 - Class 4A - Compulsory Acquisition of Rights - Works for the protection of existing UKOP apparatus affected by the authorised development
 - Class 5 - Compulsory acquisition of rights - Access
 - Class 6 - Compulsory acquisition of rights - Drainage
 - Class 7 - Temporary use
 - Class 8 - Land not subject to powers of acquisition nor temporary use

Notes
 1. For additional detail on the plan suites, please refer to the Guide to Plans (document reference 2.0), located in the Volume 2 of the DCO application.
 2. This drawing is scaled at paper size A0, therefore any prints taken at smaller sizes will affect accuracy of the measurement units and should not be scaled against.

Coordinate System: British National Grid
 Sheet X Centroid Coordinate : 566248 Sheet Y Centroid Coordinate : 199938

BACKGROUND MAPPING INFORMATION HAS BEEN REPRODUCED FROM THE ORDINANCE SURVEY BY PERMISSION OF ORDINANCE SURVEY OF THE CONTROLLER OF HIS MAJESTY'S STATIONERY OFFICE. © CROWN COPYRIGHT AND DATABASE RIGHTS (2025) LICENCE OS100024241 AND AG000807946.

Issue	Date	Remarks	Drawn	Checked	Approved
D	JUN-2026	For deadline five	CLJ	RCA	KPA
C	MAY-2026	For deadline four	CLJ	RCA	KPA
B	OCT-2025	October 2025 Update	FMA	BRO	BRO
A	AUG-2025	For DCO Submission	FMA	BRO	BRO

Title:
 THE NATIONAL GRID (NORWICH TO TILBURY) ORDER
 LAND PLANS
 REGULATION 5(2)(i)-(iii)
 SECTION G (SHEET 1 OF 6,
 CHELMSFORD CITY COUNCIL
 AND BRENTWOOD BOROUGH COUNCIL)

nationalgrid

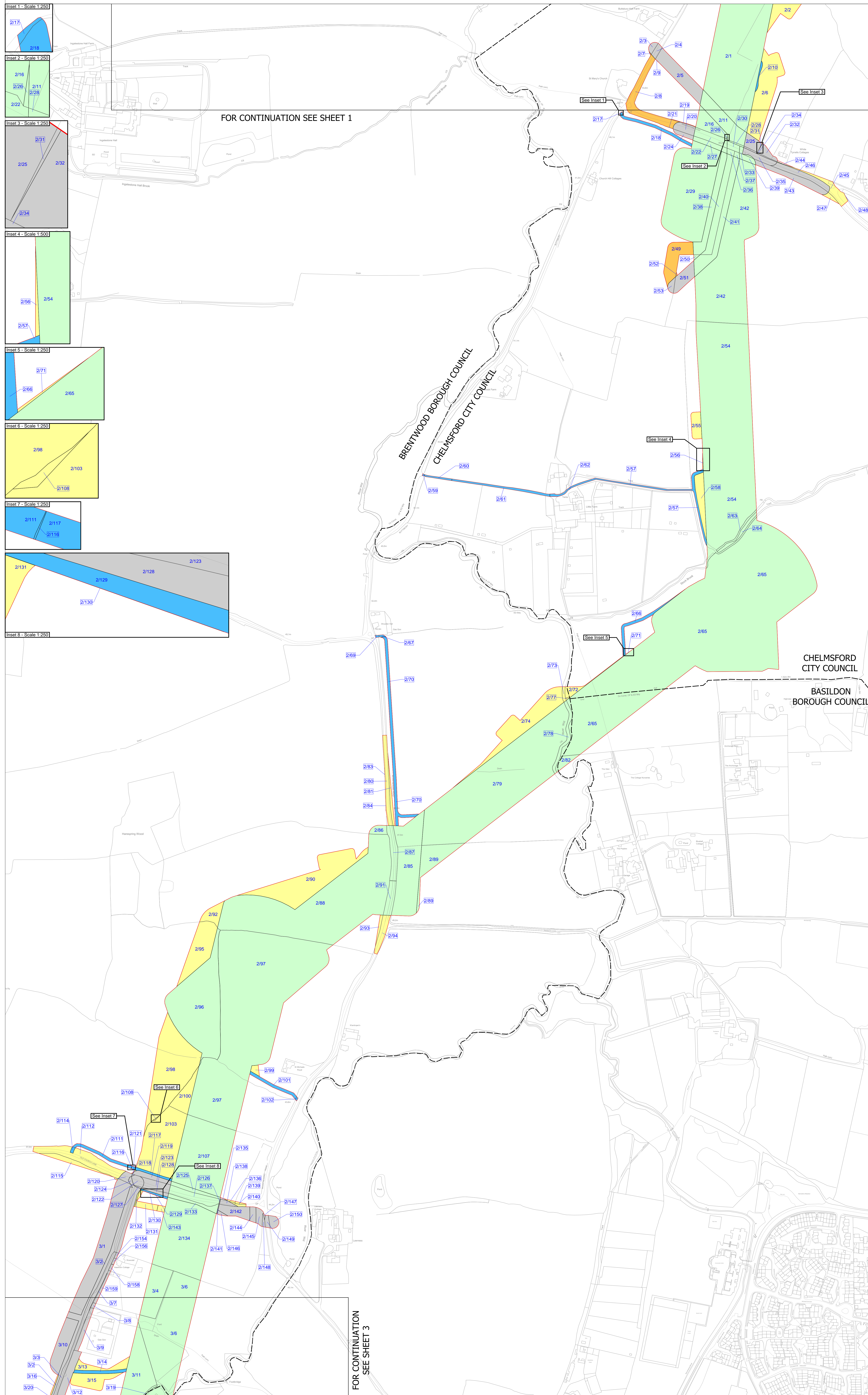
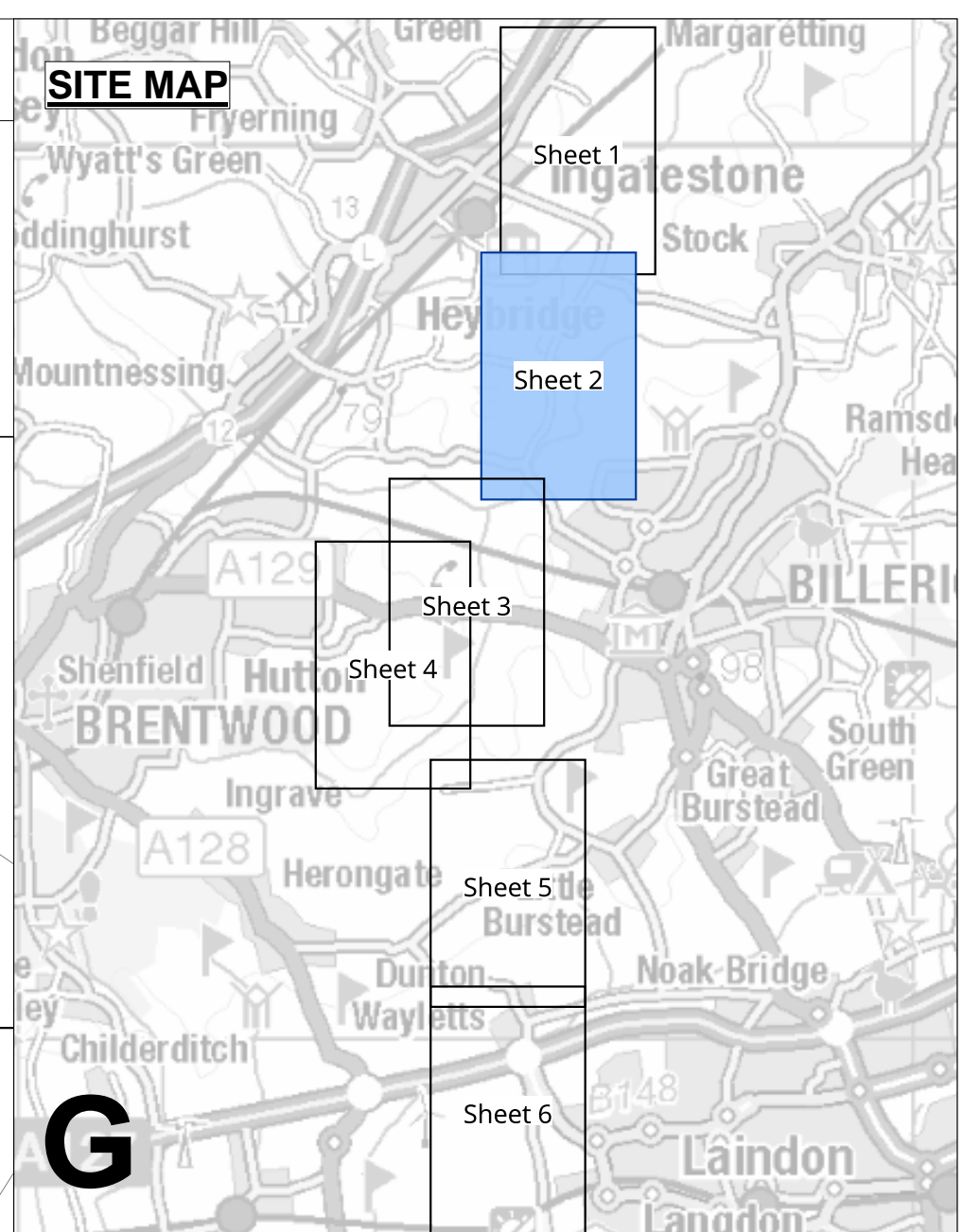
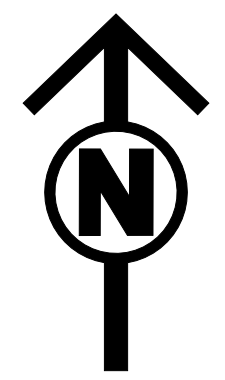
PINS Application Number: EN020027

National Grid Drawing Reference: AENC-TQST-LAN-DWG-0002

Scale	Sheet Size	Sheet	Issue
1:2,500	A0	SHEET 1 of 6	D

FOR CONTINUATION SEE SHEET 2

LAND PLANS
REGULATION 5(2)(i)-(iii)
SECTION G (SHEET 2 OF 6,
BRENTWOOD BOROUGH COUNCIL, CHELMSFORD CITY COUNCIL AND BASILDON BOROUGH COUNCIL)



FOR CONTINUATION SEE SHEET 1

FOR CONTINUATION
SEE SHEET 3

- Legend**
- Local authority boundary
 - Section boundary & local authority boundary
 - Section boundary
 - Sheet index cutlines
 - Order Limits
 - Class 1 - Compulsory acquisition of land
 - Class 2 - Compulsory acquisition of rights - Overhead line
 - Class 3 - Compulsory acquisition of rights - Underground cable system
 - Class 4 - Compulsory acquisition of rights - Overhead line and underground cable system
 - Class 4A - Compulsory Acquisition of Rights - Works for the protection of existing UKOP apparatus affected by the authorised development
 - Class 5 - Compulsory acquisition of rights - Access
 - Class 6 - Compulsory acquisition of rights - Drainage
 - Class 7 - Temporary use
 - Class 8 - Land not subject to powers of acquisition nor temporary use

Notes

- For additional detail on the plan suites, please refer to the Guide to Plans (document reference 2.0), located in the Volume 2 of the DCO application.
- This drawing is scaled at paper size A0, therefore any prints taken at smaller sizes will affect accuracy of the measurement units and should not be scaled against.

Coordinate System: British National Grid
 Sheet X Centroid Coordinate : 566032 Sheet Y Centroid Coordinate : 197417

BACKGROUND MAPPING INFORMATION HAS BEEN REPRODUCED FROM THE ORDINANCE SURVEY BY PERMISSION OF ORDINANCE SURVEY OF THE CONTROLLER OF HIS MAJESTY'S STATIONERY OFFICE. © CROWN COPYRIGHT AND DATABASE RIGHTS(2025) LICENCE OS100024241 AND AG000807946.

Issue	Date	Remarks	Drawn	Checked	Approved
D	JUN-2026	For deadline five	CLJ	RCA	KPA
C	MAY-2026	For deadline four	CLJ	RCA	KPA
B	OCT-2025	October 2025 Update	FMA	BRO	BRO
A	AUG-2025	For DCO Submission	FMA	BRO	BRO

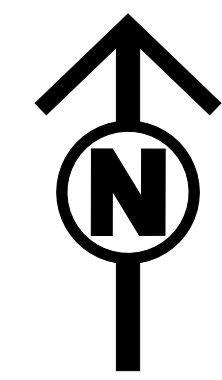
Title:
 THE NATIONAL GRID (NORWICH TO TILBURY) ORDER
 LAND PLANS
 REGULATION 5(2)(i)-(iii)
 SECTION G (SHEET 2 OF 6,
 BRENTWOOD BOROUGH COUNCIL,
 CHELMSFORD CITY COUNCIL
 AND BASILDON BOROUGH COUNCIL)

nationalgrid

PINS Application Number
EN020027

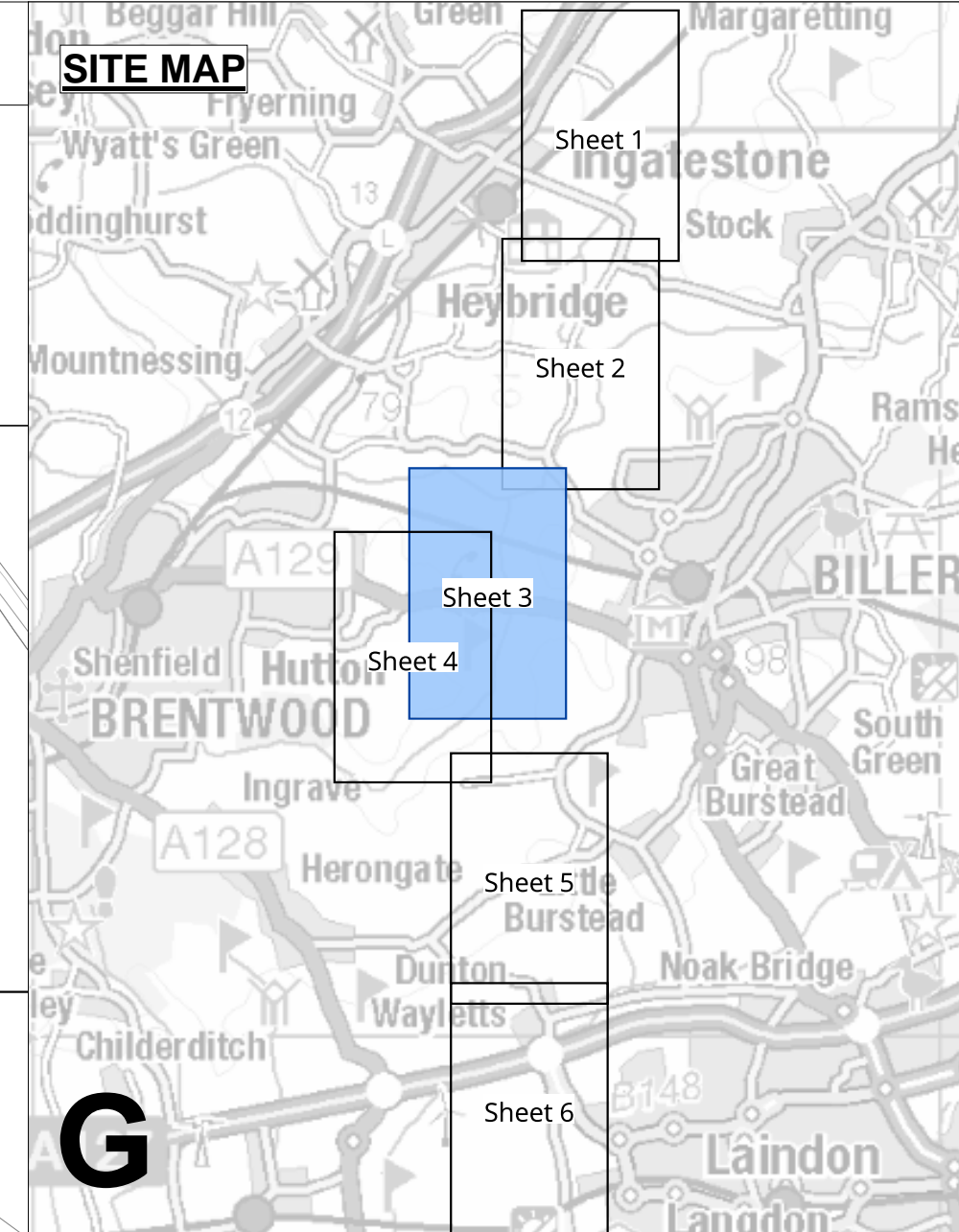
National Grid Drawing Reference
AENC-TQST-LAN-DWG-0002

Scale	Sheet Size	Sheet	Issue
1:2,500	A0	SHEET 2 of 6	D



THE NATIONAL GRID (NORWICH TO TILBURY) ORDER
 LAND PLANS
 REGULATION 5(2)(i)-(iii)
 SECTION G (SHEET 3 OF 6,
 BRENTWOOD BOROUGH COUNCIL AND BASILDON BOROUGH COUNCIL)

Application Document 2.2



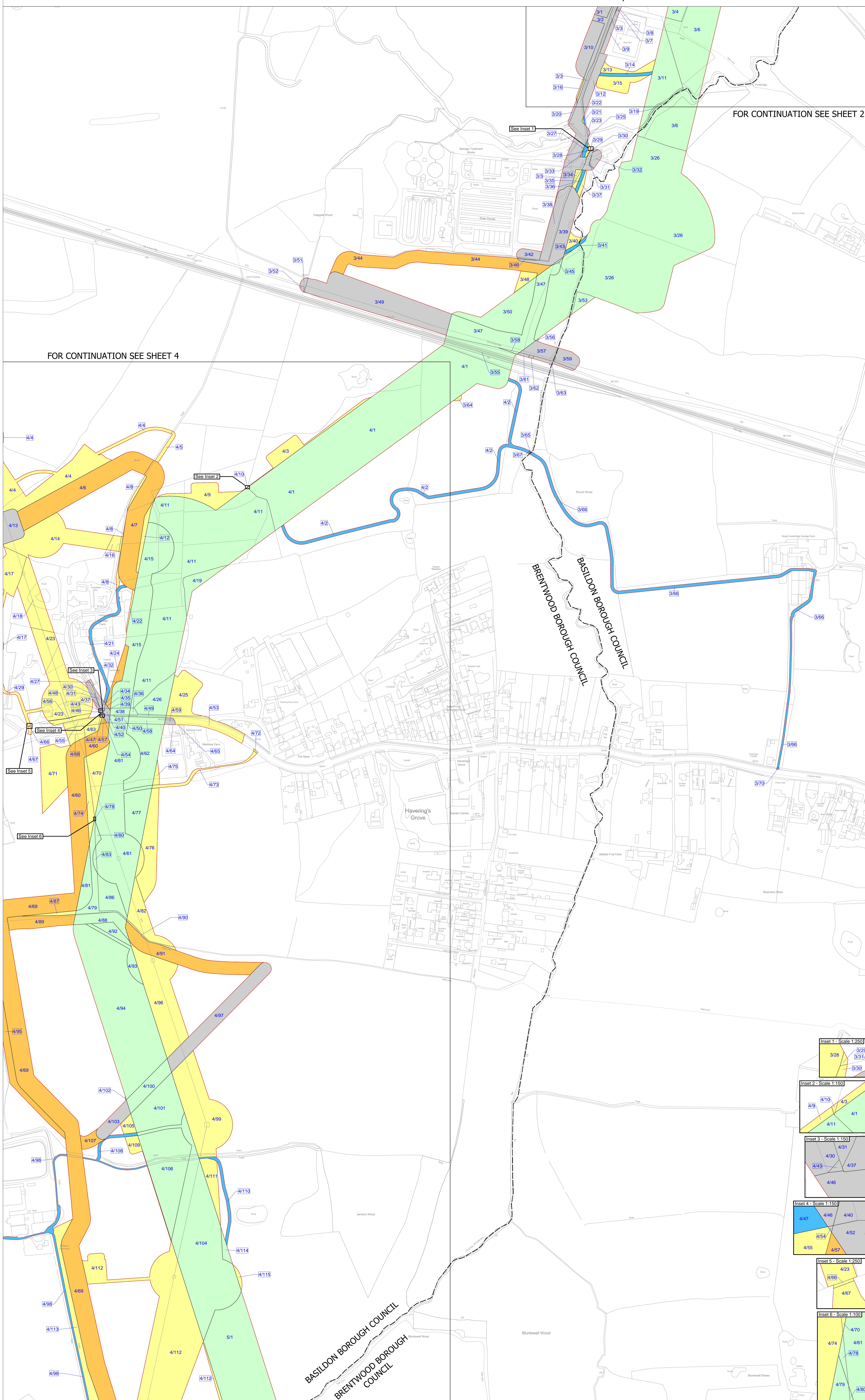
G

Legend

- Local authority boundary
- Section boundary & local authority boundary
- Section boundary
- Sheet index cutlines
- Order Limits
- Class 1 - Compulsory acquisition of land
- Class 2 - Compulsory acquisition of rights - Overhead line
- Class 3 - Compulsory acquisition of rights - Underground cable system
- Class 4 - Compulsory acquisition of rights - Overhead line and underground cable system
- Class 4A - Compulsory Acquisition of Rights - Works for the protection of existing UKOP apparatus affected by the authorised development
- Class 5 - Compulsory acquisition of rights - Access
- Class 6 - Compulsory acquisition of rights - Drainage
- Class 7 - Temporary use
- Class 8 - Land not subject to powers of acquisition nor temporary use

FOR CONTINUATION SEE SHEET 2

FOR CONTINUATION SEE SHEET 4



- Notes**
1. For additional detail on the plan suites, please refer to the Guide to Plans (document reference 2.0), located in the Volume 2 of the DCO application.
 2. This drawing is scaled at paper size A0, therefore any prints taken at smaller sizes will affect accuracy of the measurement units and should not be scaled against.

Coordinate System: British National Grid
 Sheet X Centroid Coordinate : 565005 Sheet Y Centroid Coordinate : 194885

BACKGROUND MAPPING INFORMATION HAS BEEN REPRODUCED FROM THE ORDINANCE SURVEY BY PERMISSION OF ORDINANCE SURVEY OF THE CONTROLLER OF HIS MAJESTY'S STATIONERY OFFICE. © CROWN COPYRIGHT AND DATABASE RIGHTS(2025) LICENCE OS100024241 AND ACD000807946.

Issue	Date	Remarks	Drawn	Checked	Approved
D	JUN-2026	For deadline five	CLJ	RCA	KPA
C	MAY-2026	For deadline four	CLJ	RCA	KPA
B	OCT-2025	October 2025 Update	FMA	BRO	BRO
A	AUG-2025	For DCO Submission	FMA	BRO	BRO

Title:
 THE NATIONAL GRID (NORWICH TO TILBURY) ORDER
 LAND PLANS
 REGULATION 5(2)(i)-(iii)
 SECTION G (SHEET 3 OF 6,
 BRENTWOOD BOROUGH COUNCIL
 AND BASILDON BOROUGH COUNCIL)

nationalgrid

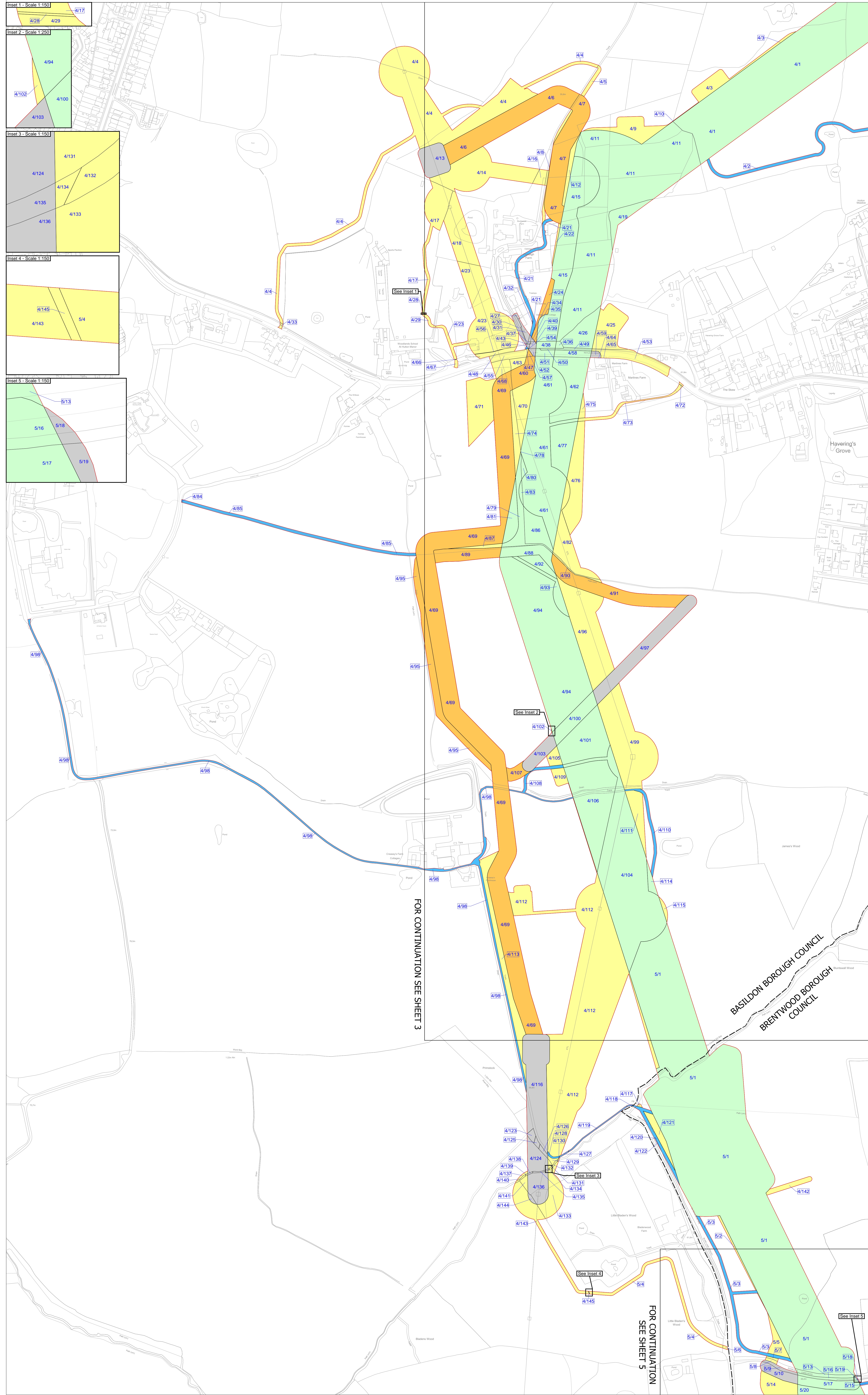
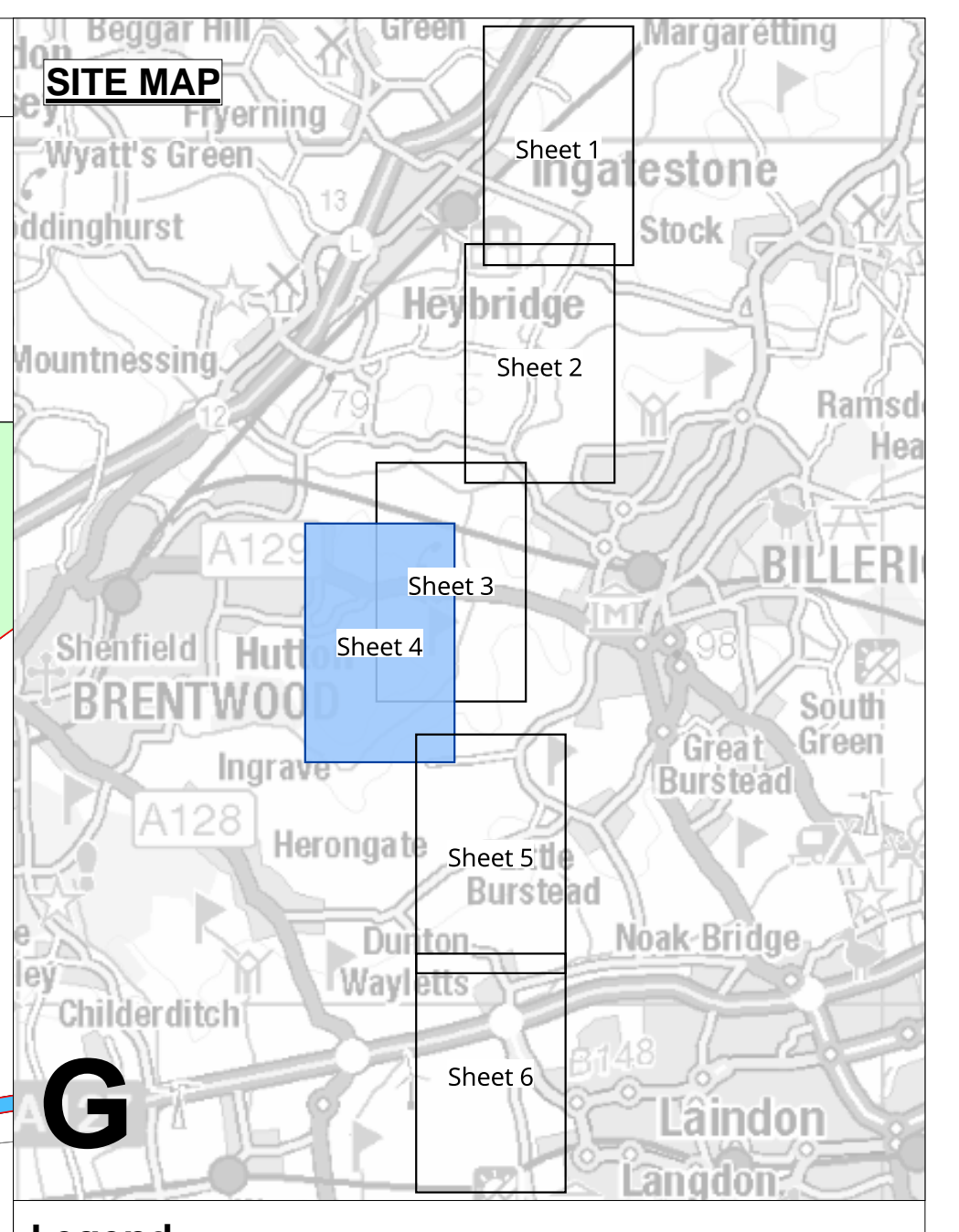
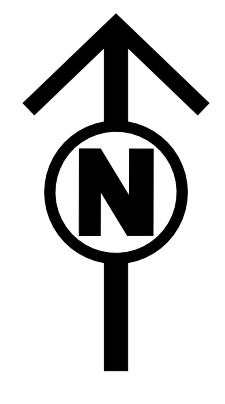
PINS Application Number: EN020027

National Grid Drawing Reference: AENC-TQST-LAN-DWG-0002

Scale	Sheet Size	Sheet	Issue
1:2,500	A0	SHEET 3 of 6	D

THE NATIONAL GRID (NORWICH TO TILBURY) ORDER
 LAND PLANS
 REGULATION 5(2)(i)-(iii)
 SECTION G (SHEET 4 OF 6,
 BRENTWOOD BOROUGH COUNCIL AND BASILDON BOROUGH COUNCIL)

Application Document 2.2



- Legend**
- Local authority boundary
 - Section boundary & local authority boundary
 - Section boundary
 - Sheet index cutlines
 - Order Limits
 - Class 1 - Compulsory acquisition of land
 - Class 2 - Compulsory acquisition of rights - Overhead line
 - Class 3 - Compulsory acquisition of rights - Underground cable system
 - Class 4 - Compulsory acquisition of rights - Overhead line and underground cable system
 - Class 4A - Compulsory Acquisition of Rights - Works for the protection of existing UKOP apparatus affected by the authorised development
 - Class 5 - Compulsory acquisition of rights - Access
 - Class 6 - Compulsory acquisition of rights - Drainage
 - Class 7 - Temporary use
 - Class 8 - Land not subject to powers of acquisition nor temporary use

Notes

- For additional detail on the plan suites, please refer to the Guide to Plans (document reference 2.0), located in the Volume 2 of the DCO application.
- This drawing is scaled at paper size A0, therefore any prints taken at smaller sizes will affect accuracy of the measurement units and should not be scaled against.

Coordinate System: British National Grid
 Sheet X Centroid Coordinate: 564179 Sheet Y Centroid Coordinate: 194182

BACKGROUND MAPPING INFORMATION HAS BEEN REPRODUCED FROM THE ORDINANCE SURVEY BY PERMISSION OF ORDINANCE SURVEY OF THE CONTROLLER OF HIS MAJESTY'S STATIONERY OFFICE. © CROWN COPYRIGHT AND DATABASE RIGHTS (2025) LICENCE OS100024241 AND ACD000807946.

Issue	Date	Remarks	Drawn	Checked	Approved
D	JUN-2026	For deadline five	CLJ	RCA	KPA
C	MAY-2026	For deadline four	CLJ	RCA	KPA
B	OCT-2025	October 2025 Update	BBU	AMI	BRO
A	AUG-2025	For DCO Submission	BBU	AMI	CLJ

Title:
 THE NATIONAL GRID (NORWICH TO TILBURY) ORDER
 LAND PLANS
 REGULATION 5(2)(i)-(iii)
 SECTION G (SHEET 4 OF 6,
 BRENTWOOD BOROUGH COUNCIL
 AND BASILDON BOROUGH COUNCIL)

nationalgrid

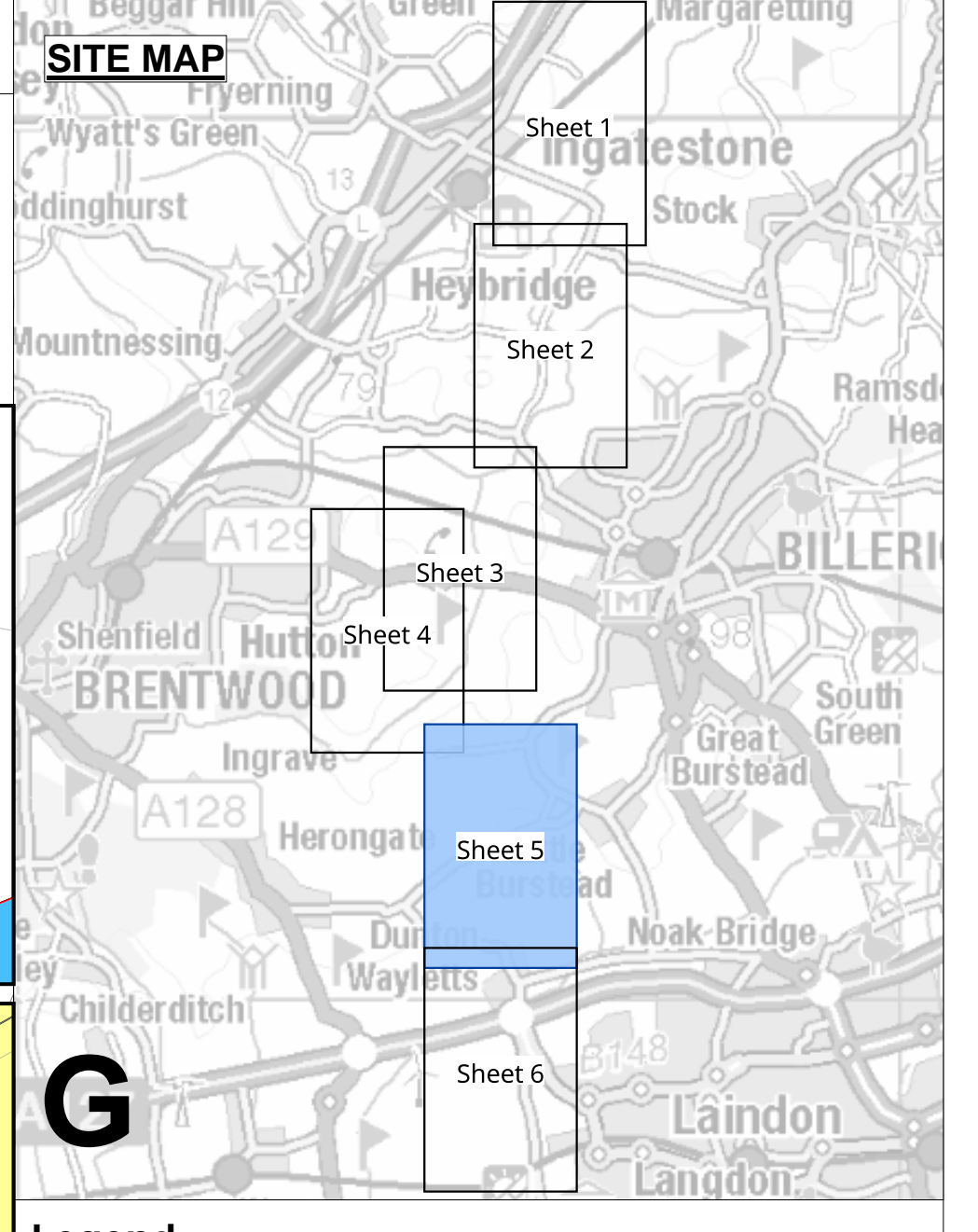
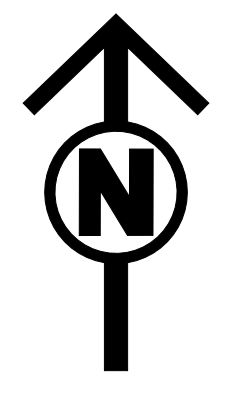
PINS Application Number: EN020027

National Grid Drawing Reference: AENC-TQST-LAN-DWG-0002

Scale	Sheet Size	Sheet	Issue
1:2,500	A0	SHEET 4 of 6	D

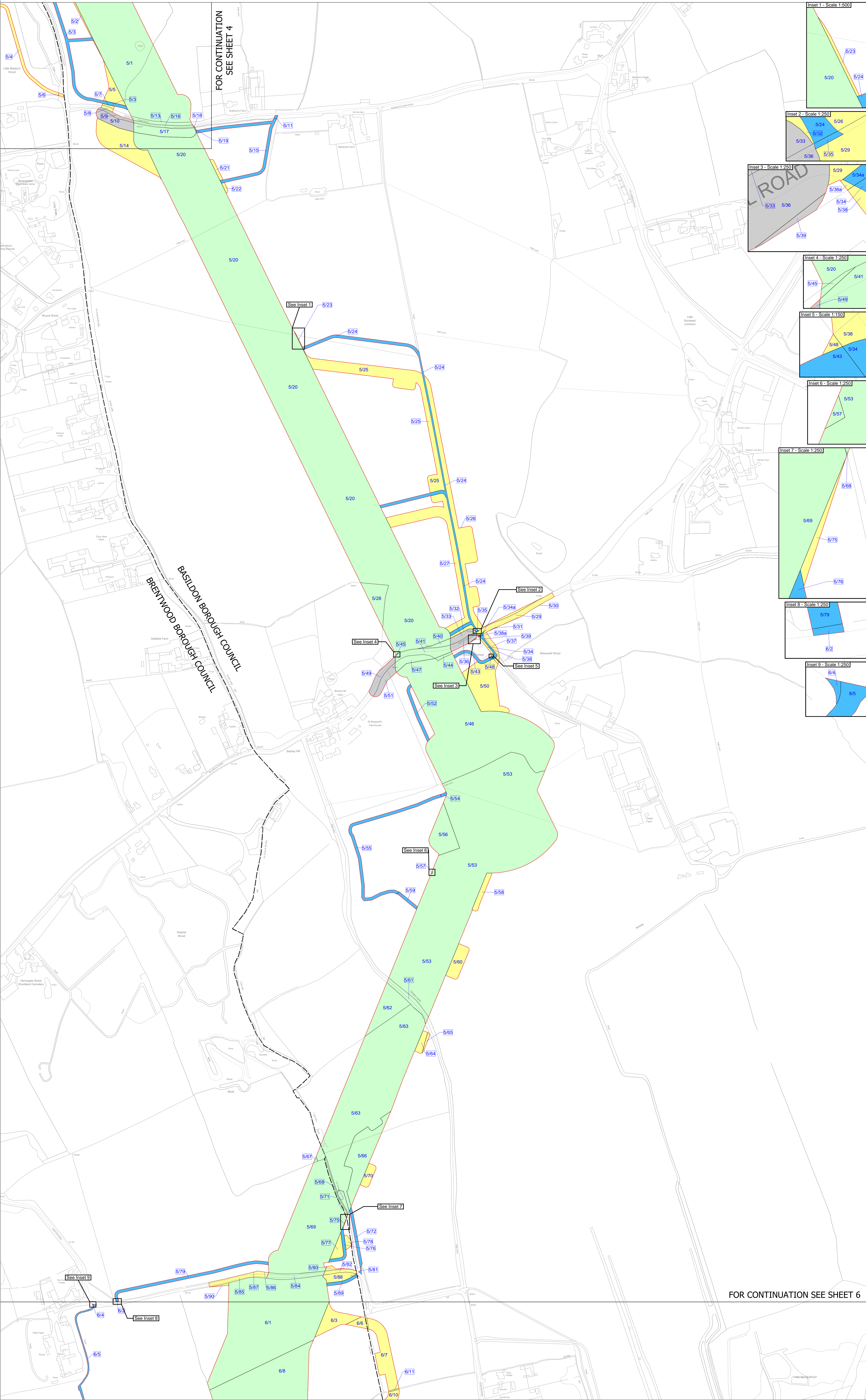
THE NATIONAL GRID (NORWICH TO TILBURY) ORDER
 LAND PLANS
 REGULATION 5(2)(i)-(iii)
 SECTION G (SHEET 5 OF 6,
 BRENTWOOD BOROUGH COUNCIL AND BASILDON BOROUGH COUNCIL)

Application Document 2.2



Legend

- Local authority boundary
- Section boundary & local authority boundary
- Section boundary
- Sheet index cutlines
- Order Limits
- Class 1 - Compulsory acquisition of land
- Class 2 - Compulsory acquisition of rights - Overhead line
- Class 3 - Compulsory acquisition of rights - Underground cable system
- Class 4 - Compulsory acquisition of rights - Overhead line and underground cable system
- Class 4A - Compulsory Acquisition of Rights - Works for the protection of existing UKOP apparatus affected by the authorised development
- Class 5 - Compulsory acquisition of rights - Access
- Class 6 - Compulsory acquisition of rights - Drainage
- Class 7 - Temporary use
- Class 8 - Land not subject to powers of acquisition nor temporary use



Notes
 1. For additional detail on the plan suites, please refer to the Guide to Plans (document reference 2.0), located in the Volume 2 of the DCO application.
 2. This drawing is scaled at paper size A0, therefore any prints taken at smaller sizes will affect accuracy of the measurement units and should not be scaled against.

Coordinate System: British National Grid
 Sheet X Centroid Coordinate: 565465 Sheet Y Centroid Coordinate: 191738

BACKGROUND MAPPING INFORMATION HAS BEEN REPRODUCED FROM THE ORDINANCE SURVEY BY PERMISSION OF ORDINANCE SURVEY OF THE CONTROLLER OF HIS MAJESTY'S STATIONERY OFFICE. © CROWN COPYRIGHT AND DATABASE RIGHTS(2025) LICENCE OS100024241 AND AG0000807946.

D	JUN-2026	For deadline five	CLJ	RCA	KPA
C	MAY-2026	For deadline four	CLJ	RCA	KPA
B	OCT-2025	October 2025 Update	FMA	BRO	BRO
A	AUG-2025	For DCO Submission	FMA	BRO	BRO

Issue **Date** **Remarks** **Drawn** **Checked** **Approved**

Title:
 THE NATIONAL GRID (NORWICH TO TILBURY) ORDER
 LAND PLANS
 REGULATION 5(2)(i)-(iii)
 SECTION G (SHEET 5 OF 6,
 BRENTWOOD BOROUGH COUNCIL
 AND BASILDON BOROUGH COUNCIL)

nationalgrid

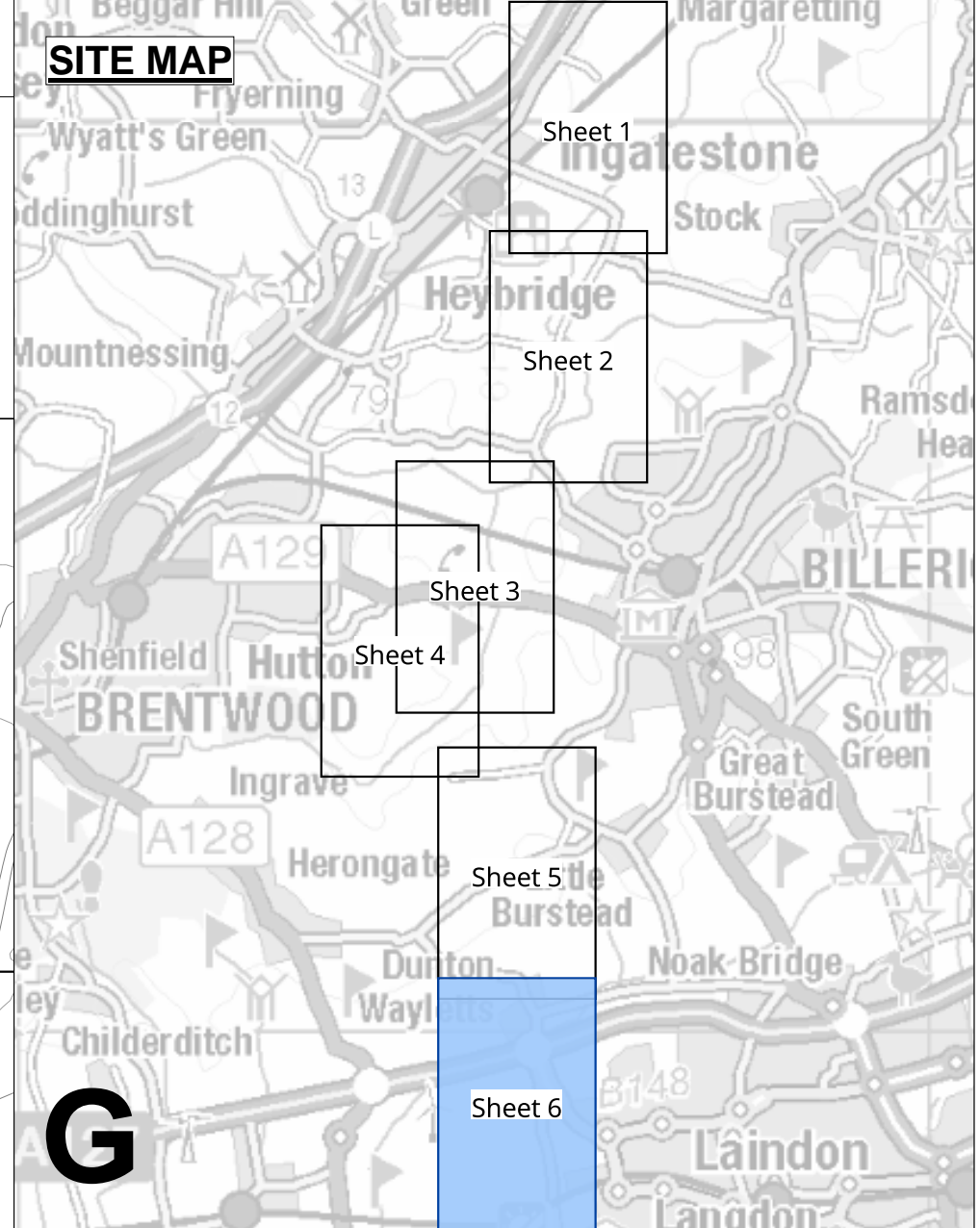
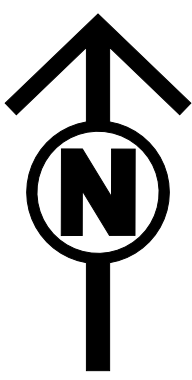
PINS Application Number: EN020027

National Grid Drawing Reference: AENC-TQST-LAN-DWG-0002

Scale	Sheet Size	Sheet	Issue
1:2,500	A0	SHEET 5 of 6	D

FOR CONTINUATION SEE SHEET 6

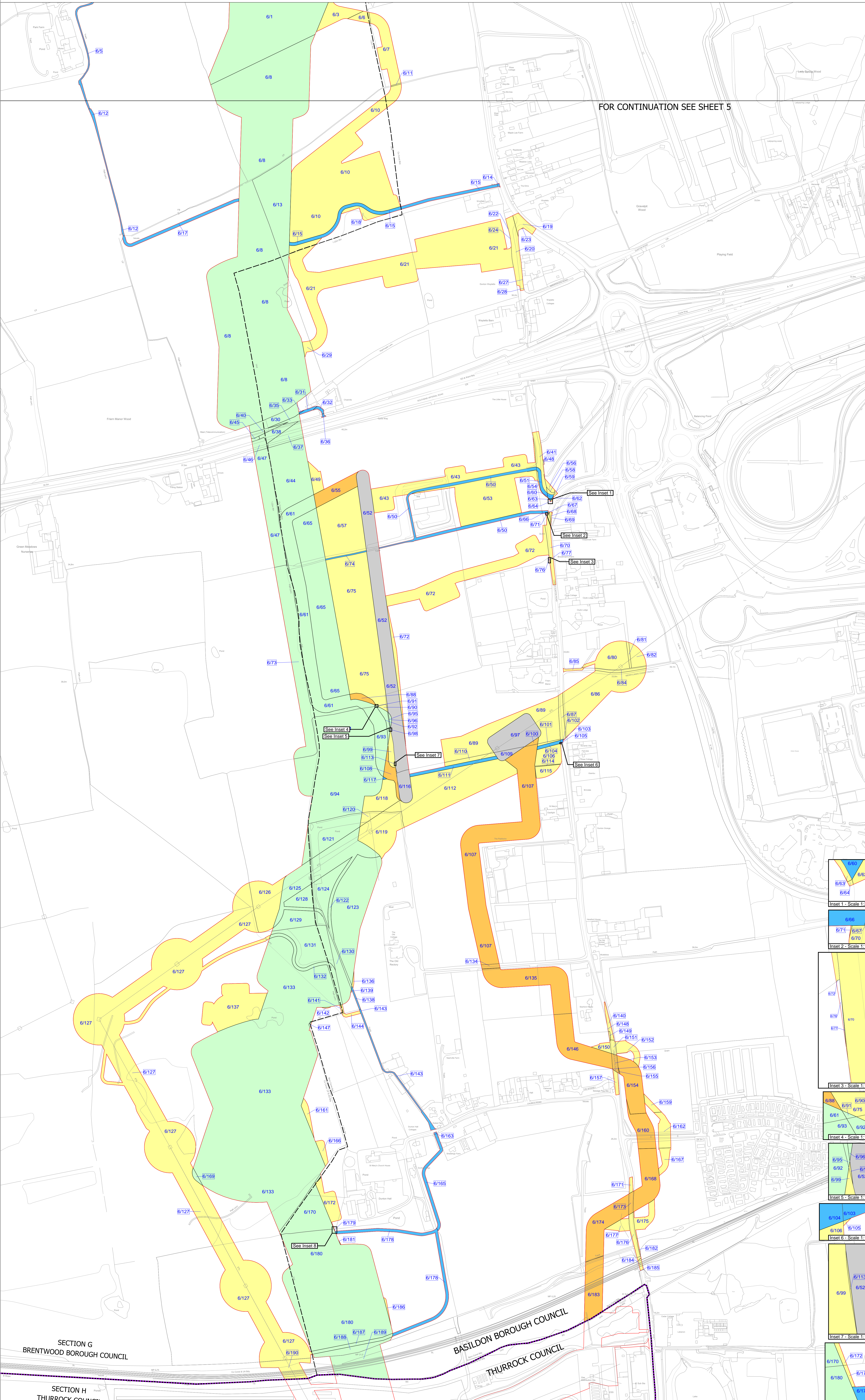
LAND PLANS
REGULATION 5(2)(i)-(iii)
SECTION G (SHEET 6 OF 6,
BRENTWOOD BOROUGH COUNCIL, BASILDON BOROUGH COUNCIL AND THURROCK COUNCIL)



FOR CONTINUATION SEE SHEET 5

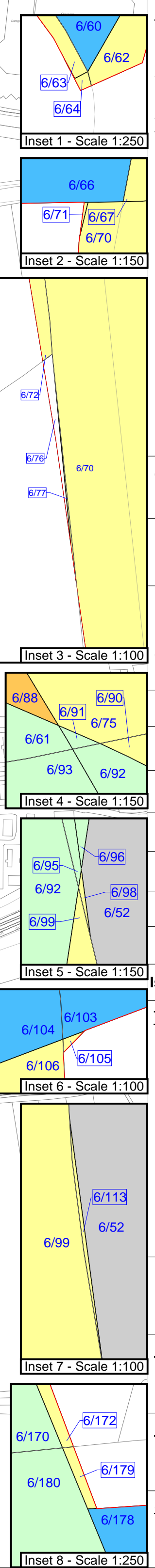
Legend

- Local authority boundary
- Section boundary and local authority boundary
- Section boundary
- Sheet index cutlines
- Order Limits
- Class 1 - Compulsory acquisition of land
- Class 2 - Compulsory acquisition of rights - Overhead line
- Class 3 - Compulsory acquisition of rights - Underground cable system
- Class 4 - Compulsory acquisition of rights - Overhead line and underground cable system
- Class 4A - Compulsory Acquisition of Rights - Works for the protection of existing UKOP apparatus affected by the authorised development
- Class 5 - Compulsory acquisition of rights - Access
- Class 6 - Compulsory acquisition of rights - Drainage
- Class 7 - Temporary use
- Class 8 - Land not subject to powers of acquisition nor temporary use



Notes

- For additional detail on the plan suites, please refer to the Guide to Plans (document reference 2.0), located in the Volume 2 of the DCO application.
- This drawing is scaled at paper size A0, therefore any prints taken at smaller sizes will affect accuracy of the measurement units and should not be scaled against.



Coordinate System: British National Grid
Sheet X Centroid Coordinate: 565465 Sheet Y Centroid Coordinate: 189201

BACKGROUND MAPPING INFORMATION HAS BEEN REPRODUCED FROM THE ORDINANCE SURVEY BY PERMISSION OF THE ORDINANCE SURVEY OF THE CONTROLLER OF HIS MAJESTY'S STATIONERY OFFICE. © CROWN COPYRIGHT AND DATABASE RIGHTS (2025) LICENCE OS100024241 AND ACD000807946.

Issue	Date	Remarks	Drawn	Checked	Approved
D	JUN-2026	For deadline five	CLJ	RCA	KPA
C	MAY-2026	For deadline four	CLJ	RCA	KPA
B	OCT-2025	October 2025 Update	FMA	BRO	BRO
A	AUG-2025	For DCO Submission	FMA	BRO	BRO

Title:
THE NATIONAL GRID (NORWICH TO TILBURY) ORDER
LAND PLANS
REGULATION 5(2)(i)-(iii)
SECTION G (SHEET 6 OF 6,
BRENTWOOD BOROUGH COUNCIL,
BASILDON BOROUGH COUNCIL,
AND THURROCK COUNCIL)

nationalgrid
PINS Application Number
EN020027

National Grid Drawing Reference
AENC-TQST-LAN-DWG-0002

Scale	Sheet Size	Sheet	Issue
1:2,500	A0	SHEET 6 of 6	D

National Grid plc
National Grid House,
Warwick Technology Park,
Gallows Hill, Warwick.
CV34 6DA United Kingdom

Registered in England and Wales
No. 4031152
nationalgrid.com